

SOT-23 Plastic-Encapsulate Voltage Regulators

78L18 Three-terminal positive voltage regulator

FEATURES

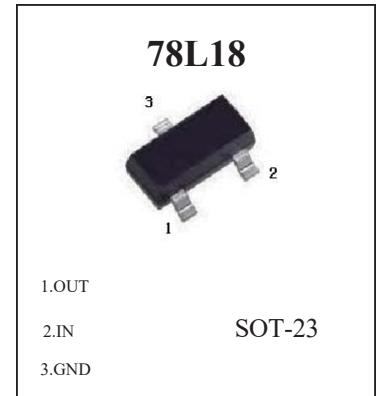
Maximum Output current I_O : 0.1 A

Output voltage V_O : 18V

Continuous total dissipation P_D : 0.35 W ($T_a = 25^\circ\text{C}$)

ABSOLUTE MAXIMUM RATINGS (Operating temperature range applies)

Parameter	Symbol	Value	Unit
Input Voltage	V_I	30	V
Operating Junction Temperature Range	T_{OPR}	0-150	$^\circ\text{C}$
Storage Temperature Range	T_{STG}	-65-150	$^\circ\text{C}$

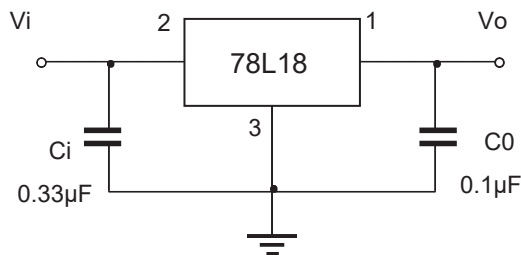


ELECTRICAL CHARACTERISTICS AT SPECIFIED VIRTUAL JUNCTION TEMPERATURE ($V_i=26\text{V}, I_o=40\text{mA}, C_i=0.33\mu\text{F}, C_o=0.1\mu\text{F}$, unless otherwise specified)

Parameter	Symbol	Test conditions	Min	Typ	Max	Unit	
Output voltage	V_o	25°C	17.3	18	18.7	V	
		0-125 $^\circ\text{C}$	$20.5\text{V} \leq V_i \leq 33\text{V}, I_o = 1\text{mA} - 40\text{mA}$	17.1	18	18.9	V
			$V_i = 26\text{V}, I_o = 1\text{mA} - 70\text{mA}$	17.1	18	18.9	V
Load Regulation	$\frac{\Delta V_o}{V_o}$	$I_o = 1\text{mA} - 100\text{mA}, V_i = 26\text{V}$	25°C	27	180	mV	
		$I_o = 1\text{mA} - 40\text{mA}, V_i = 26\text{V}$	25°C	19	90	mV	
Line regulation	$\frac{\Delta V_o}{V_o}$	$20.5\text{V} \leq V_i \leq 33\text{V}, I_o = 40\text{mA}$	25°C	70	360	mV	
		$22\text{V} \leq V_i \leq 33\text{V}, I_o = 40\text{mA}$	25°C	64	300	mV	
Quiescent Current	I_q	25°C		4.7	6.5	mA	
Quiescent Current Change	ΔI_q	$22\text{V} \leq V_i \leq 33\text{V}, I_o = 40\text{mA}$	0-125 $^\circ\text{C}$		1.5	mA	
		$1\text{mA} \leq I_o \leq 40\text{mA}, V_i = 26\text{V}$	0-125 $^\circ\text{C}$		0.1	mA	
Output Noise Voltage	V_N	10Hz $\leq f \leq$ 100KHz	25°C	89		$\mu\text{V}/V_o$	
Ripple Rejection	RR	21.5V $\leq V_i \leq$ 31.5V, $f = 120\text{Hz}$	0-125 $^\circ\text{C}$	32	36	dB	
Dropout Voltage	V_d	25°C		1.7		V	

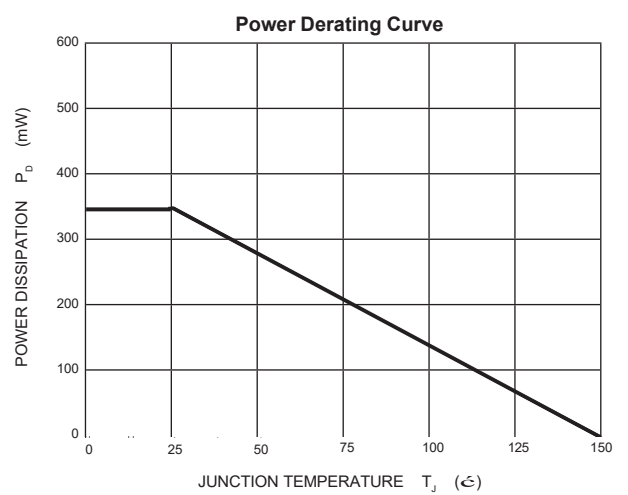
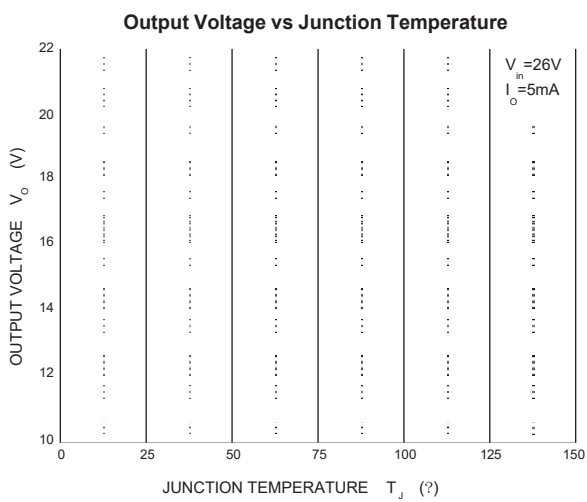
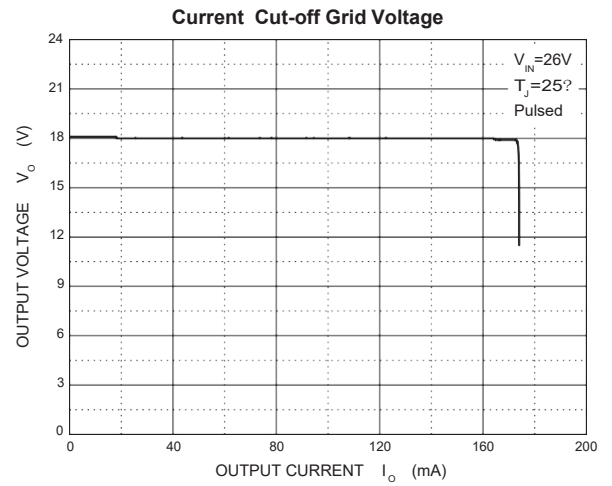
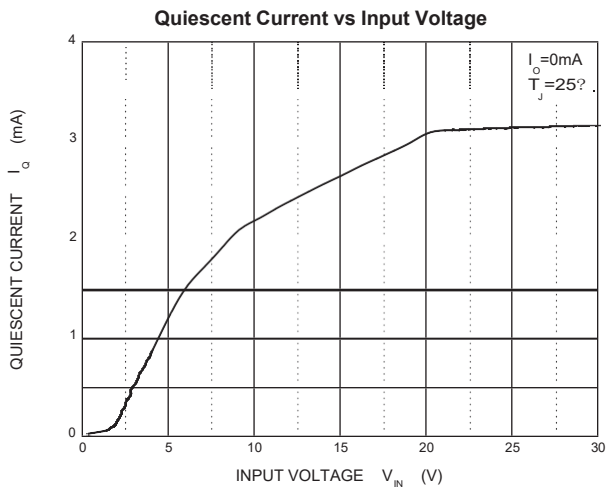
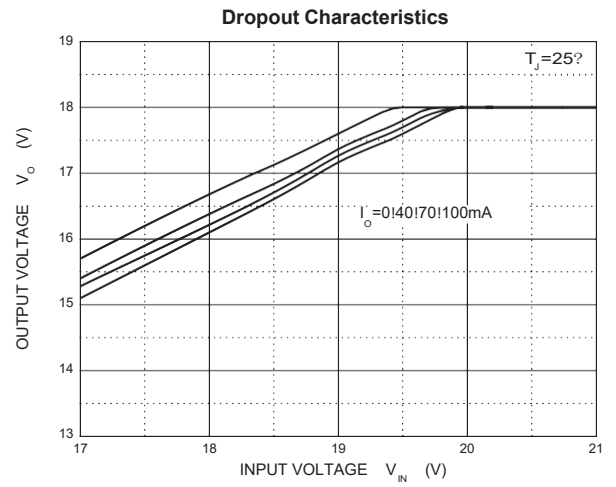
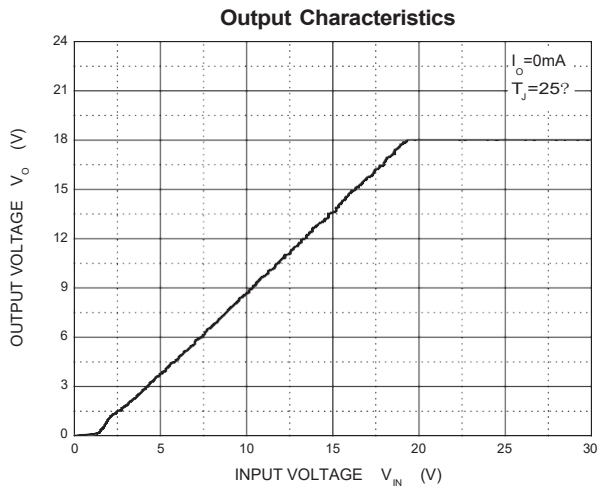
* Pulse test.

TYPICAL APPLICATION



Note: Bypass capacitors are recommended for optimum stability and transient response and should be located as close as Possible to the regulators.

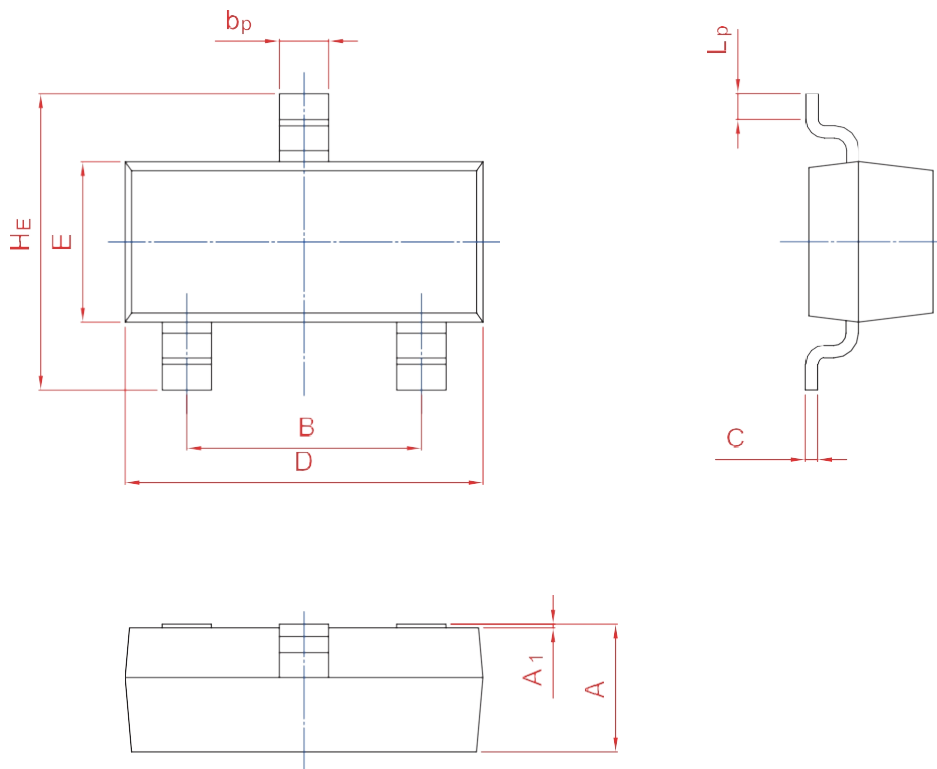
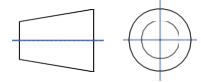
Typical Characteristics



PACKAGE OUTLINE

Plastic surface mounted package; 3 leads

SOT-23



UNIT	A	B	b _p	C	D	E	H _E	A ₁	L _p
mm	1.40	2.04	0.50	0.19	3.10	1.65	3.00	0.100	0.50
	0.95	1.78	0.35	0.08	2.70	1.20	2.20	0.013	0.20