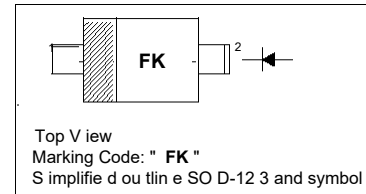


CRS01W Surface Mount Schottky Barrier Diode**PINNING**

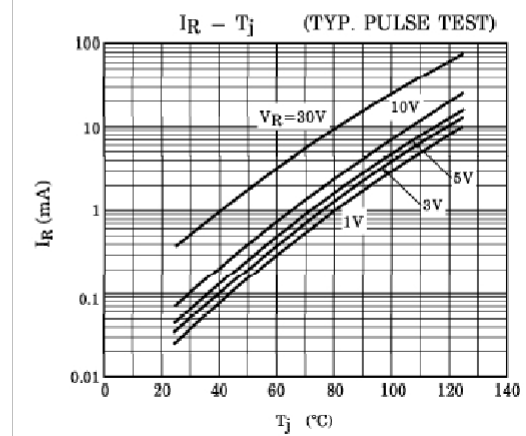
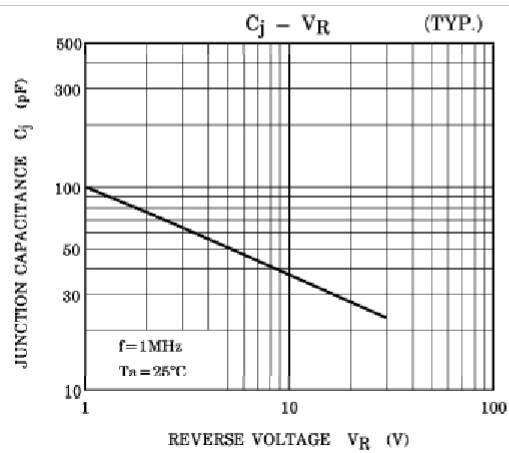
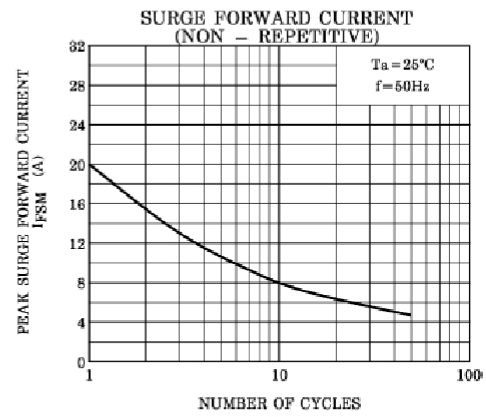
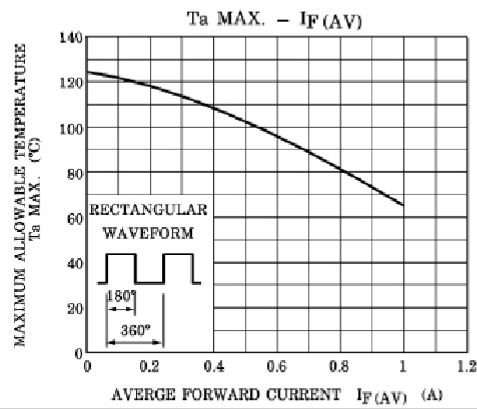
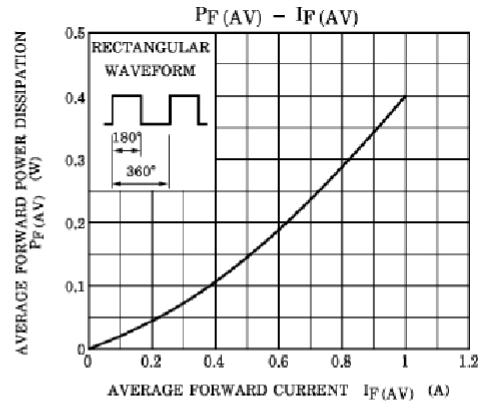
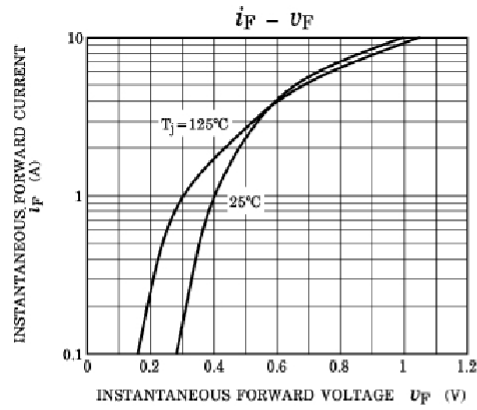
PIN	DESCRIPTION
1	Cathode
2	Anode

**Absolute Maximum Ratings ($T_a = 25^\circ\text{C}$)**

Parameter	Symbol	Value	Unit
Peak Repetitive Reverse Voltage	V_{RRM}	30	V
Average Forward Current	$I_{F(AV)}$	1.0	A
Non-Repetitive Peak One Cycle Surge Forward Current at 50 Hz at 60 Hz	I_{FSM}	20 22	A
Junction Temperature Range	T_j	- 40 to + 125	$^\circ\text{C}$
Storage Temperature Range	T_{stg}	- 40 to + 125	$^\circ\text{C}$

Characteristics at $T_a = 25^\circ\text{C}$

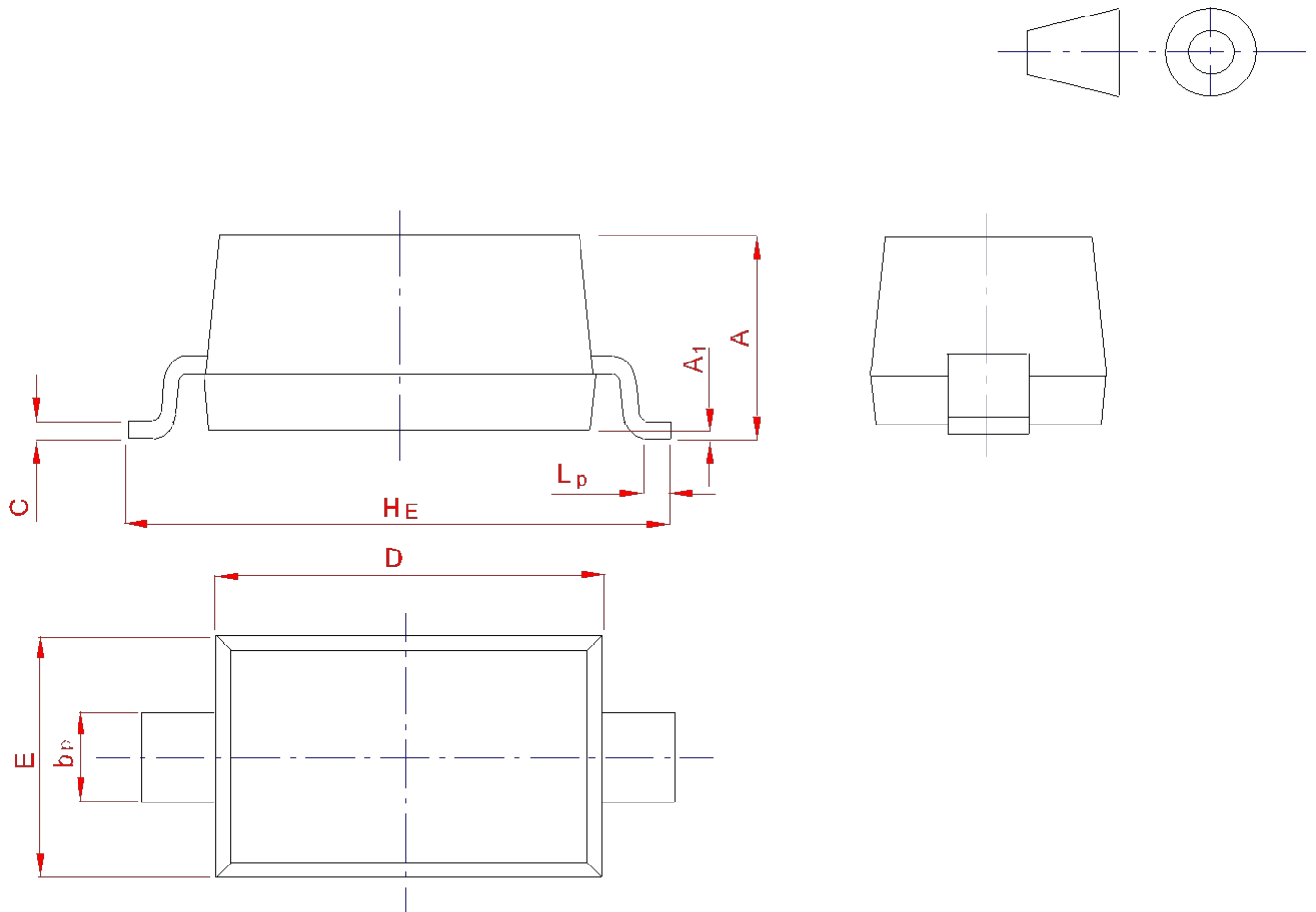
Parameter	Symbol	Typ.	Max.	Unit
Peak Forward Voltage at $I_{FM} = 0.1\text{ A}$ at $I_{FM} = 0.7\text{ A}$ at $I_{FM} = 1\text{ A}$	V_{FM}	0.25 0.33 0.36	- 0.37 -	V
Repetitive Peak Reverse Current at $V_{RRM} = 30\text{ V}$	I_{RRM}	-	1.5	mA
Junction Capacitance at $V_R = 10\text{ V}$, $f = 1\text{ MHz}$	C_J	40	-	pF



PACKAGE OUTLINE

Plastic surface mounted package; 2 leads

SOD-123



UNIT	A	bp	C	D	E	HE	A1	Lp
mm	1.20	0.60	0.135	2.75	1.65	3.85	0.10	0.50
	0.90	0.50	0.100	2.55	1.55	3.55	0.01	0.20