

1N60PWS SCHOTTKY BARRIER DIODE

Features

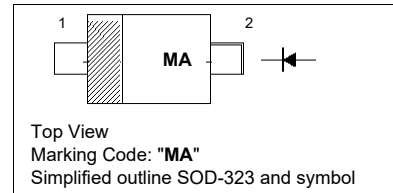
- High reliability
- Low forward voltage and reverse current

Applications

- For electronic calculator, etc.
- Low current rectification and high speed switching

PINNING

PIN	DESCRIPTION
1	Cathode
2	Anode



Absolute Maximum Ratings ($T_a = 25^\circ\text{C}$)

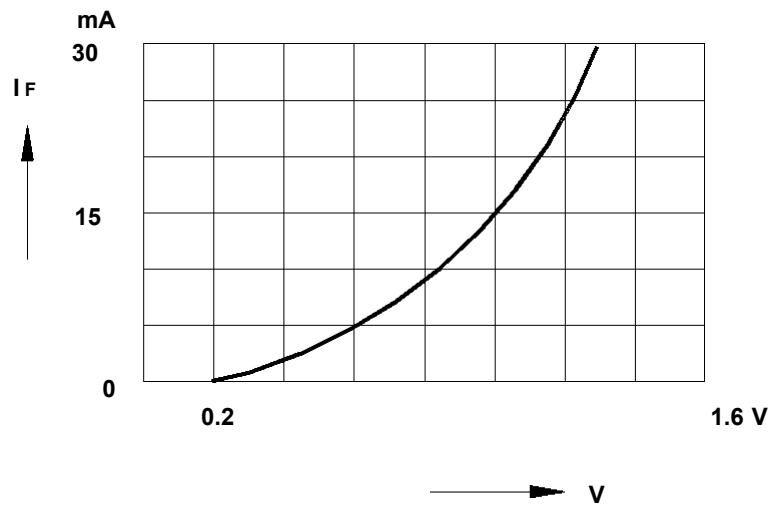
Parameter	Symbol	Value	Unit
Peak Reverse Voltage	V_{RM}	45	V
Reverse Voltage	V_R	10	V
Average Rectified Output Current	I_O	50	mA
Peak Forward Current	I_{FM}	150	mA
Surge Forward Current	I_{surge}	500	mA
Junction Temperature	T_j	125	$^\circ\text{C}$
Storage Temperature Range	T_{Stg}	- 55 to + 125	$^\circ\text{C}$

Characteristics at $T_a = 25^\circ\text{C}$

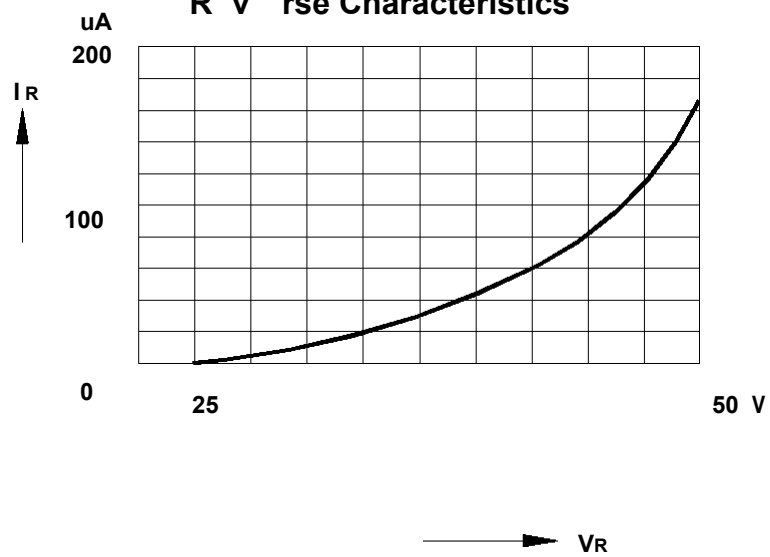
Parameter	Symbol	Min.	Max.	Unit
Forward Current at $V_F = 1\text{ V}$	I_F	4	-	mA
Reverse Current at $V_R = 10\text{ V}$	I_R	-	50	μA
Reverse Voltage at $I_R = 100\ \mu\text{A}$	V_R	45	-	V
Junction Capacitance at $f = 1\text{ MHz}$, $V = -1\text{ V}$	C_J	-	1	pF
Rectification efficiency at $V_i = 2\text{ Vrms}$, $R = 5\text{ K}\Omega$, $C = 20\text{ pF}$, $f = 40\text{ MHz}$	η	55	-	%

Typical Characteristics

Forward Characteristics



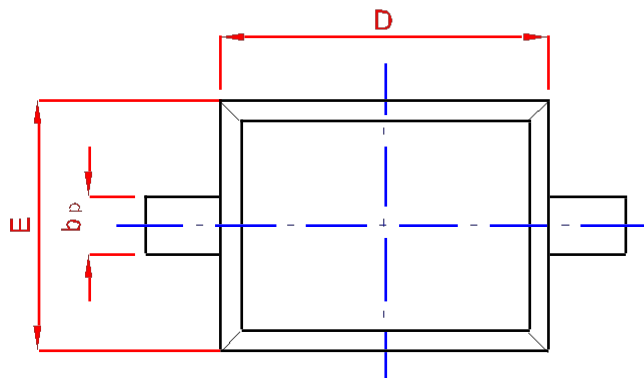
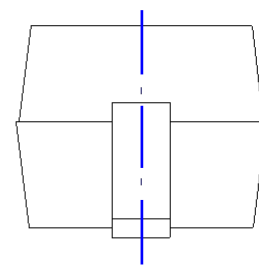
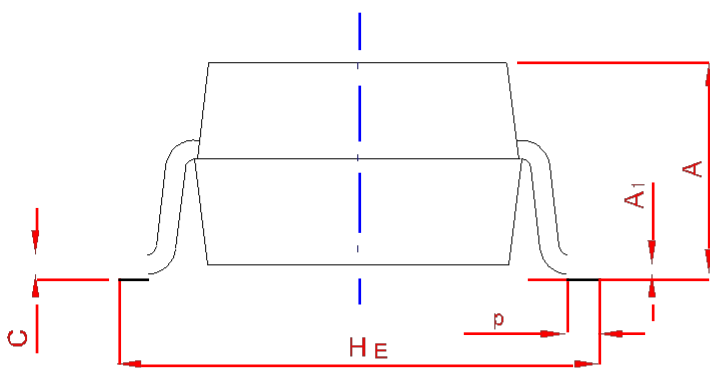
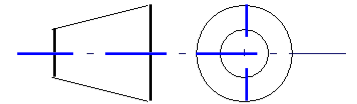
Reverse Characteristics



PACKAGE OUTLINE

Plastic surface mounted package; 2 leads

SOD-323



UNIT	A	bp	C	D	E	HE	A1	Lp
mm	1.20	0.40	0.15	1.80	1.35	2.80	0.10	0.50
	0.90	0.25	0.10	1.60	1.15	2.30	0.01	0.20